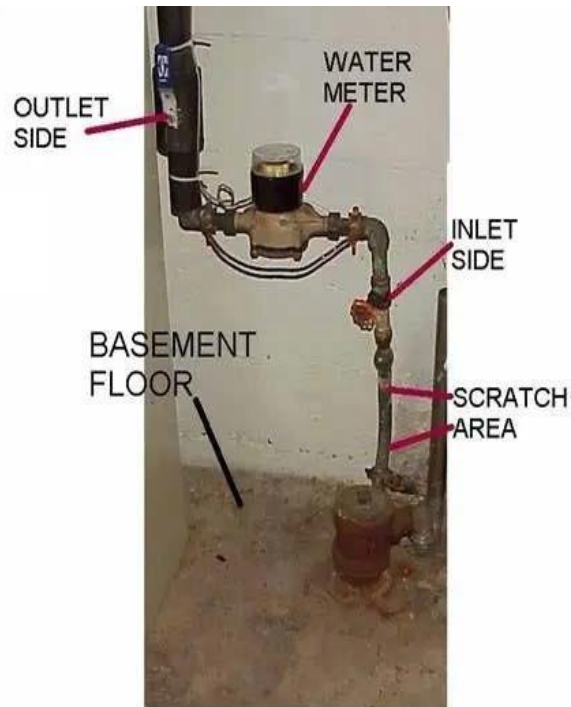
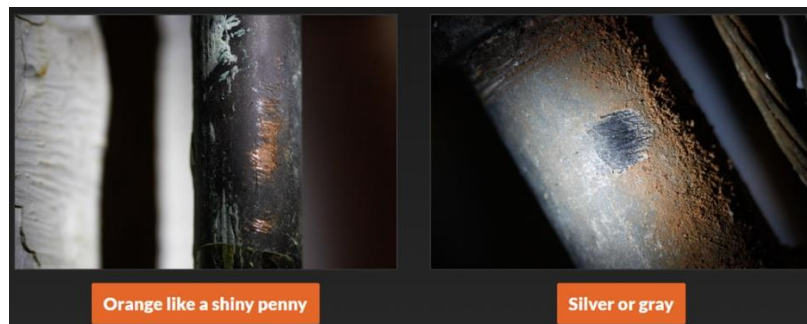


The Guidelines listed below will help the city in determining information needed to identify the type and size of your service lines.

Picture 1: Example picture of service and information to include



- Email clear pictures of the service line and the first valve prior (Preferably the side of the valve) to the meter to rlfcityinfo@gmail.com
- Be sure the picture includes the floor, foundation, or ground in which the service makes it's entry from the ground.
- If the service water line has paint, corrosion, etc., please scrape (with a penny or similar coin – See Picture 2 as an example) or remove such items for clear identification of the service line coatings prior to taking the picture.
- If material of the service line looks gray or dark gray, please use a magnet on the service line cleaned surface. If magnet sticks to service line, please show this in Picture 2 as well.
- See below for an example of what Picture 2 should look like.



Picture 2: Example of picture of scratched service if service material is painted, corroded, etc.